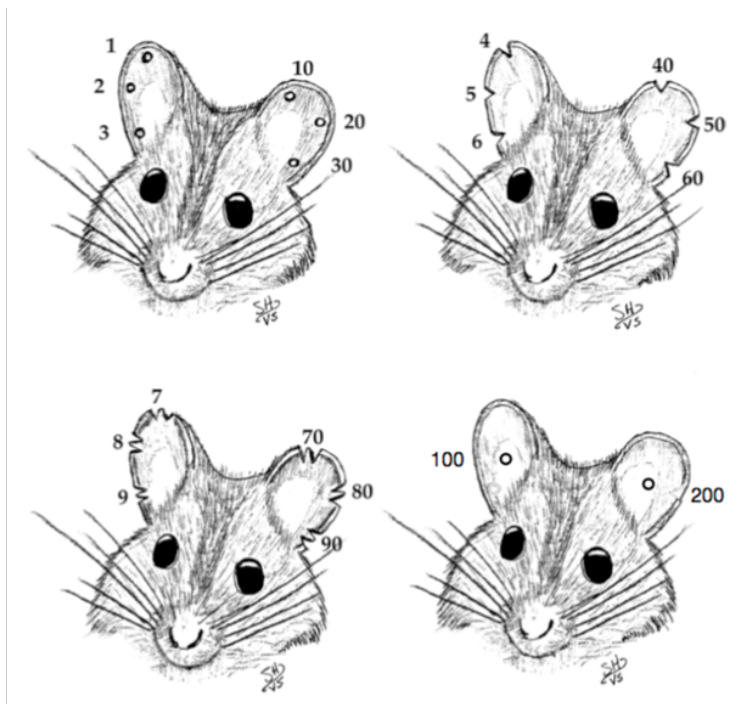


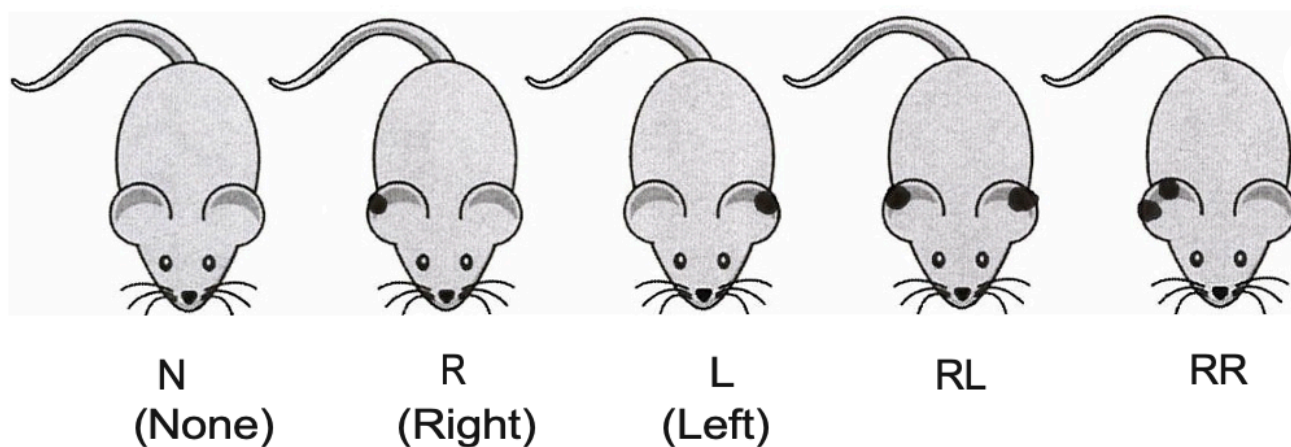
Numbering Systems

Below are two common examples of numbering systems. Each lab or facility may use a different system to distinguish the animals in the cage, or even in the colony. Be sure to understand the system your lab uses to identify the animals.

This identification method can be used to identify up to 399 animals within a colony:



Alternatively, this method may be used if you only need to distinguish the animals in each cage:



Notes

Keep instruments in good working order to ensure a full punch on the first attempt. If the instrument does not fully remove tissue, re-punch or use a small scissors to remove tissue. The tool may also need to be replaced.

For questions or to schedule a hands-on training, contact the RARC Trainers:

trainer@rarc.wisc.edu

608-890-0969